

Using BlackBerry Phone to Access Remote DVR Server

Using the BlackBerry phone can connect to remote DVR server through the Internet to view the live video.

Supported Model	Blackberry 9500 storm
OS	blackberry 4.7 (Please refer to blackberry website for detail OS version)

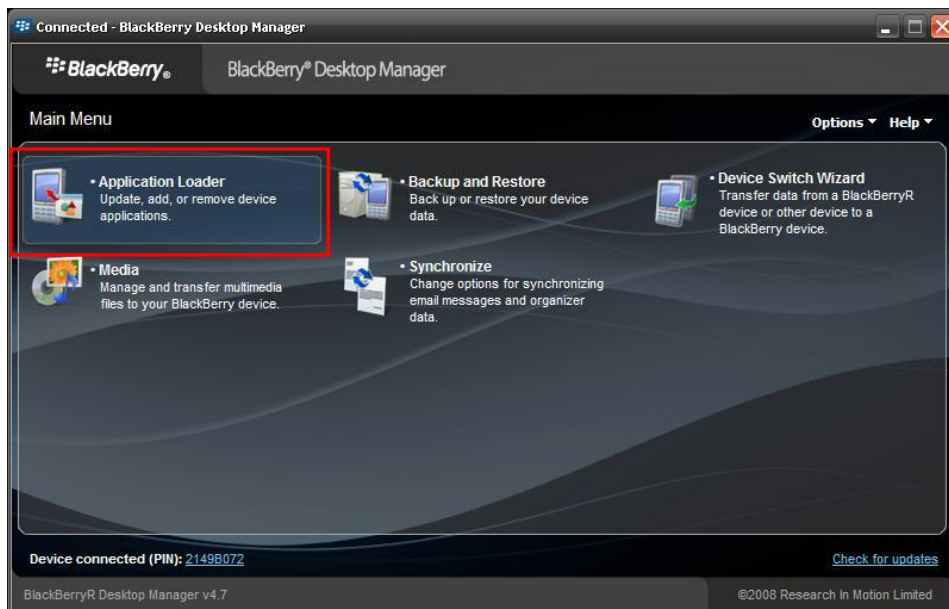
Note

All the illustrations are schematic illustration for user's reference only.

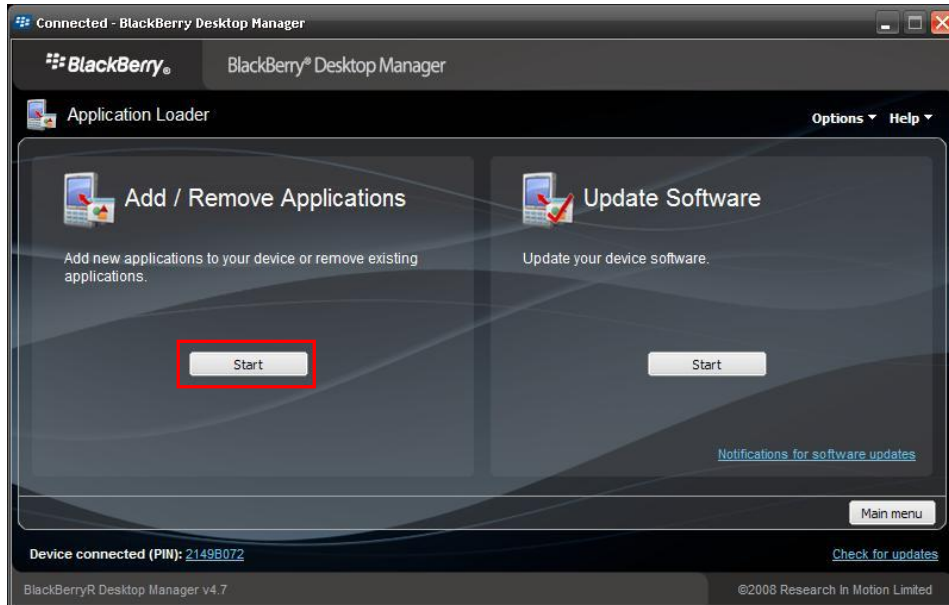
Download the iBBViewer

To use this feature, it is required to download the iBBViewer application to your BlackBerry phone. Please follow the below description to download the iBBViewer:

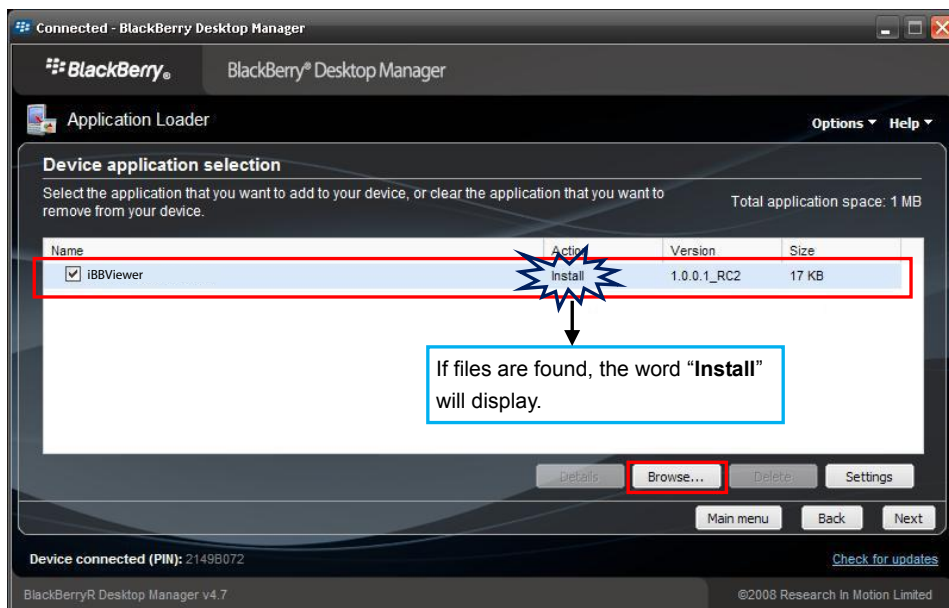
1. Connect the BlackBerry phone to the PC.
2. Download the iBBViewer files:
<http://www.CCTVBuyers.com/Downloads/iBBviewer.zip> and
save in same folder on the hard disk of the PC that is connected with BlackBerry phone.
3. Extract the zip file to your desktop.
4. Run the **BlackBerry Desktop Manager** application on your PC.
5. In BlackBerry Desktop Manager UI, select **Application Loader**.



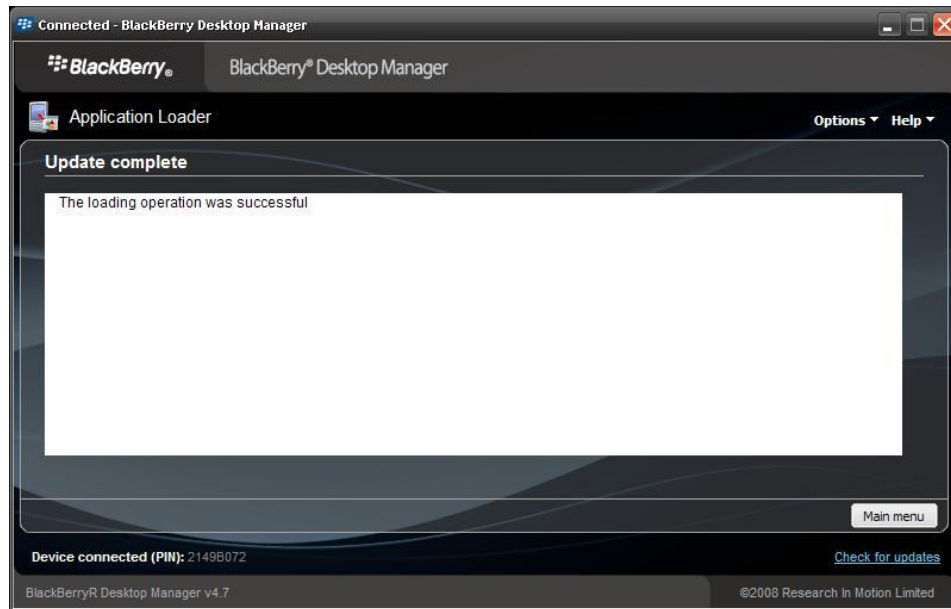
6. And then, click **Start** button of **Add/Remove Applications** option.



7. In Device application selection window, click **Browse** button to locate the iBBViewer files that you have download from the ftp or download site and select the **iBBViewer.alx**. After located the files, user will see the iBBViewer application list out. Mark the check box and click **Next**. And then, in next screen, click **Finish** to install the iBBViewer application.



8. After installation completed, the iBBViewer application is installed on your BlackBerry phone and is ready for use.

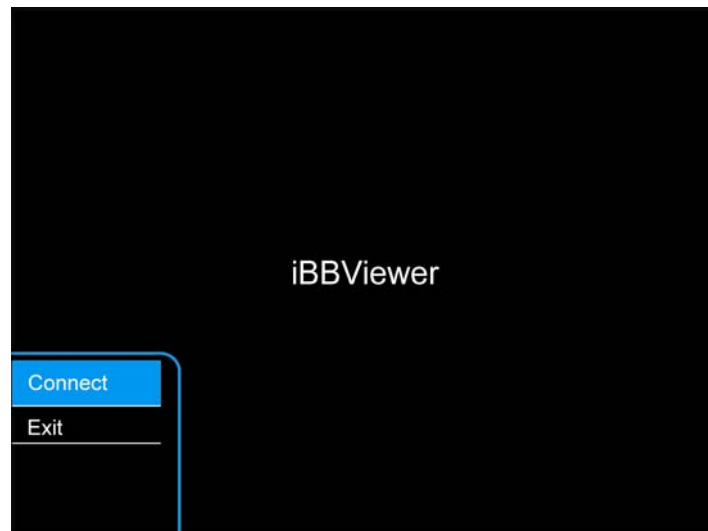


Using the iBBViewer

1. After iBBViewer has been installed to your BlackBerry phone, select the iBBViewer to execute.



2. Press menu button of BlackBerry phone to call out menu. Select **Connect** to make a connection to the DVR server that user wants to monitor.



Tip

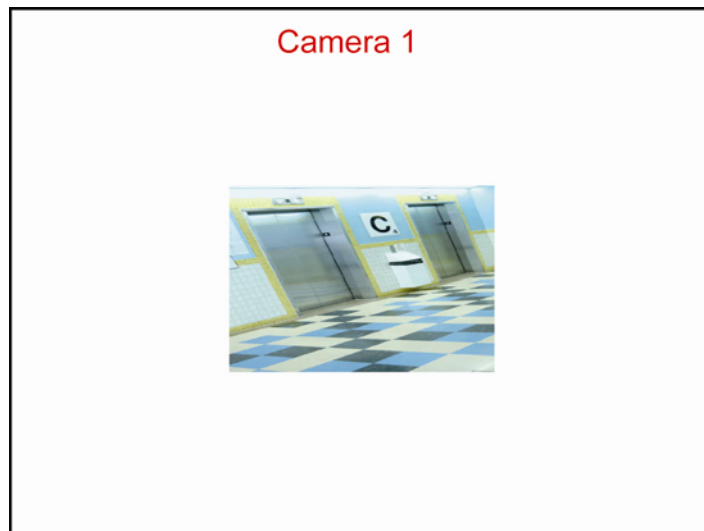
If BlackBerry phone is unable to connect with DVR server, please select **Option > Advanced Option > TCP/IP** in main menu of BlackBerry phone. In TCP/IP, please check the APN setting and make sure APN settings are correct.

3. In connection screen, enter **DVR IP**, **Port**, **User ID** and **Password** for login to the DVR server.

- **DVR IP:** IP address of the remote DVR server.
- **Port:** The connection port of the remote DVR server. The default value is 5550.
- **User ID:** The user account to login the remote DVR server.
- **Password:** The password for login authentication.

Network Setting
DVR IP
Port 5550
User ID
Password

4. When connection is successful, the screen will display the video from the DVR server. On top of screen will show the camera channel is currently display.
5. Press **menu** button of BlackBerry phone to call out menu. User can select different channel to view. If the camera channel is a PTZ camera, user can use keyboard (**2** is up, **8** is down, **4** is left, **6** is right) of BlackBerry phone to control camera.



6. To disconnect current connection with DVR server, click Stop and return to the iBBViewer screen.