

1080P

High Speed Dome Camera

Speed Dome Shines,

Even in the dark with upto 500 Feet
Visible Distance.

1/2.8" SONY 2.4MP 1080P,
37X Optical Zoom, 16X Digital Zoom,
DWDR, AF, ATW, AE, ICR, 3D Privacy Mask,
Auto Focus

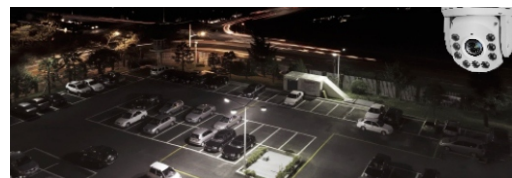


Specification

| | |
|----------------------------------|---|
| Model NO. | iHDPTZIR37xSN |
| Image Device | 1/2.8" Sony EXMOR CMOS |
| Effective Pixels | PAL: 1080P@25fps, NTSC:1080P@30fps |
| UTC | Yes |
| OSD menu | English, Chinese, Russian, Spanish Optional |
| Preset position | 256 Preset Positions |
| Scan | Auto scan and left-right limited scan, speed adjustable |
| Patro | 8 tracks, preset, speed and dwell time changeable |
| Pattern | 6 Lines(Pan/Tilt/Zoom, every line can record up to 120 seconds) |
| Alarm | 4 alarm inputs, 2 alarm outputs optional |
| Password protection | Yes |
| Temperature display and Settings | Yes (Temperature alarm set, Temperature Display) |
| Authority Management | Yes |
| Address range | 0~255 (Setup by dip switcher, firmware) |
| Communication | RS485 (+/-) |
| Baud rate | 2400/4800/9600/19200 |
| Protocol | PELCO-D, PELCO-P, ULTRACK, VICON, DYNACOLOR |
| Pan range | 0°~ 360° continuously |
| Pan speed | 0.1~ 240°/s |
| Tilt range | 0°~ 90°, Auto Flip 180° to Continue Monitor |
| Tilt speed | 0.1~ 180°/s |
| Precision | ±0.10° |
| IR Distance | 500 Feet |
| IR Control | Auto/Manual |
| IR Driver | PWM |
| IR Detect Time | 2~15s, Sync with the Camera |
| IR Light Level/IR Sensitivity | 0~30 Adjustable |
| Standby Level | OFF/1~30 Adjustable |
| IR Mode | Auto/Far/Near/Far+Near/Close |
| Lens | 37X Optical Zoom, 16X Digital Zoom |

Multi-Function

9 Array LEDs
Up to 500 Feet IR Distance



Make control easier than your imagination

AHD PTZ UTC Function



i Link
Professionals 1080p HD

