



The Small Window Takes You To A Safe, Convenient Digital World & Perfect Life!

Rear side



iHVR8HD-1080



Specification

Model		iHVR8HD-1080
System	Main processor	Industrial grade embedded micro controller chip Huawei HIS chipset
	Operating system	Embedded LINUX operating system
	System resource	Multi-channel real-time recording synchronously, multi-channel real-time playback, multi-channel multi-user network operation, USB back up.
Display	Operation interface	16 bit real color GUI interface support mouse operation (Take all analog input as an example, others are depended on the selected channel mode)
	Display screen	1/8 screen
Video	Image encode	H.264(High Profile)
	Monitor quality	VGA : 1080N ; HDMI : 1080N
	Playback quality	4*1080N @25fps (960*1080) Coaxial HD Mode
	Encode capability	8*1080N @25fps (960*1080) Coaxial HD Mode
	Decode capability	4*1080N @25fps (960*1080) Coaxial HD Mode
	Multi Mode Input & Playback Channels	Pure Analog: 8*AHD-1080p - 4 Playback, 8*AHD-1080N - 4 Playback, 8*AHD-720p - 8 Playback
	Multi-mode video input	Mixed Analog/IP: 2*AHD-1080p (analog) + 2*1080p (IP) -2 Playback, DVR mode : 8*1080N/4*1080P
		NVR mode: 9*1080P/16*1080P/16*960P/4*5M
	Motion detection	Each channel can set 192 (16*12) detection area ; can set multi-level of flexibility (for local analog channel only)
	Support camera	AHD, CVI, TVI, IPC, 960H
Audio	Audio compression	G.711A
Record and playback	Record mode	Manual, alarm, motion detection, timing
	Local playback	1-4ch playback synchronously; Under the mode of DVR, Max support 4CH AHD 1080N playback synchronously
	Video search	Time, date, event, channel search
Storage and back up	Space occupation	Video:1080N 30~40G/day*channel; 960P 20~30G /day*channel audio : 691.2M/day*channel
	Video storage	Local HDD , Network
	Back up mode	Network backup, USB portable HDD, USB DVD-RW
Interface	Video input	8CH BNC
	Video output	1CH VGA, 1CH HDMI
	Audio input	4CH RCA
	Audio output	1CH RCA
	Alarm input	2CH Optional
	Alarm output	1CH Optional
	Network port	RJ45 10M/100M self-adaptive Ethernet port
	PTZ control	1 RS485; support multi kinds of PTZ Protocol
	USB port	2*USB2.0
	HDD port	1 SATA (max support 6TB)
	Wireless port	3G, WIFI(extension via USB port)
Other	Tour	Yes
	Remote controller	Yes
	Power	12V/2A
	Dimension	260(Length) x234(Width) x47(Height)mm

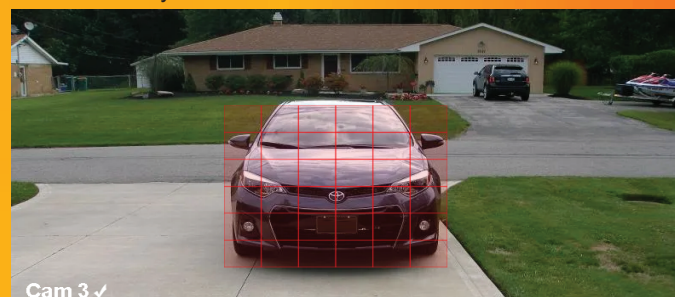
H.264 High performance Image Compression

Our DVR employs the H.264 high performance image compression algorithm for excellent image recoding quality.



Motion Detection

Have your DVR/XVR set to instantly send alert notifications to your email when motion is detected.



Remote Access

Remote monitoring over the internet through app by iPhone, iPad, Android, or by IP Address from Windows computers.



Four in One Camera

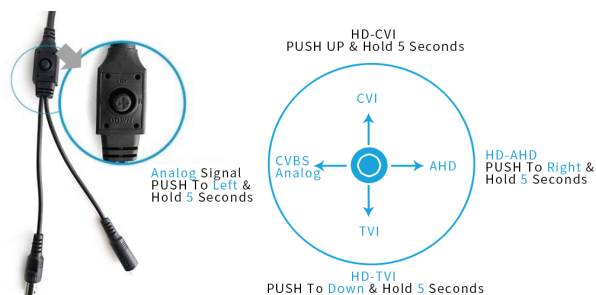
HD Analog Signal AHD, TVI, CVI, CVBS switch by OSD



Specifications

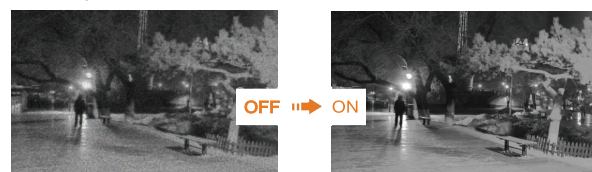
Model NO.	iHDIRDFIO-1080SNV
Video Output Mode	AHD/CVI/TVI/CVBS
Camera	
Image Sensor	Sony Starvis IMX291
Image Resolution	2.0 MP
Effective Pixels	1920*1080
TV System	PAL/NTSC
Video Output Mode	AHD/CVI/TVI: 1920*1080@30fps
Electronic Shutter	1/25s~1/50,000s, 1/30s~1/60,000s
S/N Ratio	≥50dB
Scanning System	Progressive Scan
Lens	
Focus Length	Board Lens 3.6mm
Focus Control	Fixed
Lens Type	Fixed
Pixels	3M Pixels
Auto Iris Support	N/A
Night Vision	
Infrared LED	Φ 5X24PCS
Infrared Distance	20M
IR Status	Under 10 Lux by CDS
IR Power On	CDS Auto Control
Camera Features	
Starlight	YES
Day/Night	YES
OSD Menu Language	YES
White Balance	AUTO / MANUAL
Gain Control	AUTO
Noise Reduction	DNR
Picture TVjustment	YES
WDR	DWDR
OSD Support	YES
Dip Switch	N/A
General	
Waterproof	N/A
Dual Voltage	N/A
IR Cut Filter	YES
Heater	N/A
Audio	N/A
Operation Temperature	-10°C ~ +50°C RH95% Max
Storage Temperature	-20°C ~ +60°C RH95% Max
Power Source	DC12V±10%, 550mA
Dimension	Φ 94 x 69(H) mm
Weight	500g

Mode switch by OSD



Multi-function

2D/3D-NR



Defog



DWDR



Four in One Camera

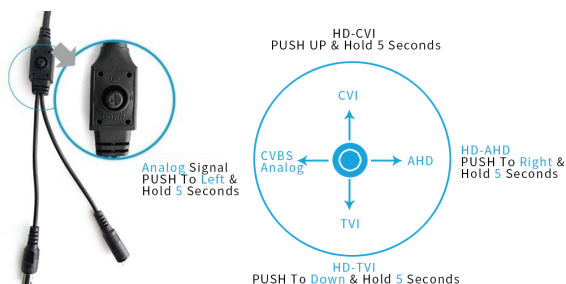
HD Analog Signal AHD, TVI, CVI, CVBS
switch by OSD



Specifications

Model NO.	iHDIRBFIO-1080SNV
Video Output Mode	AHD/CVI/TVI/CVBS
Camera	
Image Sensor	Sony Starvis IMX291
Image Resolution	2.0 MP
Effective Pixels	1920*1080
TV System	PAL/NTSC
Video Output Mode	AHD/CVI/TVI: 1920*1080@30fps
Electronic Shutter	1/25s~1/50,000s, 1/30s~1/60,000s
S/N Ratio	≥50dB
Scanning System	Progressive Scan
Lens	
Focus Length	Board Lens 3.6mm
Focus Control	Fixed
Lens Type	Fixed
Pixels	3M Pixels
Auto Iris Support	N/A
Night Vision	
Infrared LED	¢ 5X24PCS
Infrared Distance	20M
IR Status	Under 10 Lux by CDS
IR Power On	CDS Auto Control
Camera Features	
Starlight	YES
Day/Night	YES
OSD Menu Language	YES
White Balance	AUTO / MANUAL
Gain Control	AUTO
Noise Reduction	DNR
Picture TVjustment	YES
WDR	DWDR
OSD Support	YES
Dip Switch	N/A
General	
Waterproof	YES
Dual Voltage	N/A
IR Cut Filter	YES
Heater	N/A
Audio	N/A
Operation Temperature	-10°C ~ +50°C RH95% Max
Storage Temperature	-20°C ~ +60°C RH95% Max
Power Source	DC12V±10%,550mA
Dimension	86(W) x 60(H) x 55(D)mm
Weight	700g

Mode switch by OSD



Multi-function

2D/3D-NR



Defog



DWDR

