



# 5MP



The Small Window Takes You To A Safe, Convenient Digital World & Perfect Life!

Rear side



iHVR16HD-5MP

## Specification

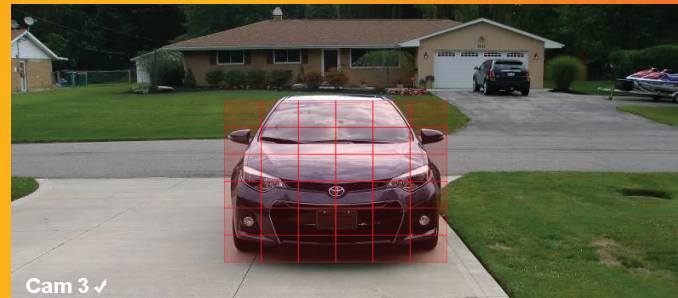
Model		iHVR16HD-5MP
System	Main processor	Industrial grade embedded micro controller chip Huawei HIS chipset
	Operating system	Embedded LINUX operating system
	System resource	Multi-channel real-time recording synchronously, multi-channel real-time playback, multi-channel multi-user network operation, USB back up.
Display	Operation interface	16 bit real color GUI interface support mouse operation
	Display screen	(Take all analog input as an example, others are depended on the selected channel mode) 1/4 screen
Video	Image encode	H.264(High Profile)
	Monitor quality	VGA : 1080P ; HDMI : 4K
	Playback quality	8*5M@11fps / 8*4M@15fps / 8*3M@18fps / 8*1080P @25fps
	Encode capability	16*5M@11fps / 16*4M@15fps / 16*3M@18fps / 16*1080P @25fps
	Decode capability	16*5M@11fps / 16*4M@15fps / 16*3M@18fps / 16*1080P @25fps
	Multi Mode Input & Playback Channels	Pure Analog: 16*AHD-5MP 8 Playback Mixed Analog/IP: 4*AHD-5MP (analog) + 4*5MP (IP) 4 Playback Pure IP: 32*1080p 8 Playback, 16*3MP (IP) 8 Playback, 8*5MP (IP) 4 Playback
	Multi-mode video input	DVR mode : 16*5M/16*4M/16*3M/16*1080P HVR mode: 8*3M+8*3M NVR mode: 8*1080P+8*960P/8*3M/4*5M
	Motion detection	Each channel can set 192 (16*12) detection area ; can set multi-level of flexibility (for local analog channel only)
	Support camera	AHD, CVI, TVI, IPC, 960H
	Audio compression	G.711A
Record and playback	Record mode	Manual, alarm, motion detection, timing
	Local playback	1-4ch playback synchronously; Under the mode of DVR, Max support 4CH AHD 1080P playback synchronously
	Video search	Time, date, event, channel search
Storage and back up	Space occupation	Video : 4M 70G~80G /day*channel ; 3M 50~60G/day*channel ; 1080P 30~40G/day*channel ; 960P 20~30G /day*channel audio : 691.2M/day*channel
	Video storage	Local HDD , Network
	Back up mode	Network backup, USB portable HDD, USB DVD-RW
Interface	Video input	4CH BNC
	Video output	1CH VGA, 1CH HDMI
	Audio input	16CH RCA
	Audio output	1CH RCA
	Alarm input	16CH
	Alarm output	2CH
	Network port	RJ45 10M/100M/1000M self-adaptive Ethernet port
	PTZ control	1 RS485 ; support multi kinds of PTZ Protocol
	USB port	2*USB2.0
	HDD port	4 SATA (each max support 6TB)
Wireless port	3G, WIFI(extension via USB port)	
Other	Tour	Yes
	Remote controller	Yes
	Power	12V/6A
	Dimension	430(Length) x366(Width) x77(Height)mm

5MP provides the viewer with an image that has 2.4 times as many pixels as 1080p resolution.



## Motion Detection

Have your DVR/XVR set to instantly send alert notifications to your email when motion is detected.



Cam 3 ✓

## Remote Access

Remote monitoring over the internet through app by iPhone, iPad, Android, or by IP Address from Windows computers.



# 5MP 4 in 1 Sony Dome Camera

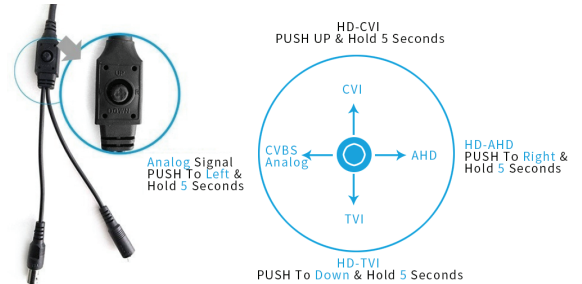
HD Analog Signal AHD, TVI, CVI, CVBS switch by OSD



## Specifications

<b>Model NO.</b>	<b>iHDIRDFIO-5SN</b>
Video Output Mode	AHD/TVI/CVI 5M@25fps; CVBS 960H
<b>Camera</b>	
Image Sensor	SONY Starvis IMX335
Image Resolution	5.0 MP
Effective Pixels	5M:2592*1944
TV System	PAL/NTSC
Video Output Mode	AHD/TVI/CVI 5M@25fps; CVBS 960H
Electronic Shutter	1/25s~1/50,000s , 1/30s~1/60,000s
S/N Ratio	≥50dB
Scanning System	Progressive Scan
<b>Lens</b>	
Focus Length	Board Lens 3.6mm
Focus Control	Fixed
Lens Type	Fixed
Pixels	5M Pixels
Auto Iris Support	N/A
<b>Night Vision</b>	
Infrared LED	42μ x 1PCS
Infrared Distance	20M
IR Status	Under 10 Lux by CDS
IR Power On	CDS Auto Control
<b>Camera Features</b>	
Starlight	/
Day/Night	YES
OSD Menu Language	YES
White Balance	AUTO / MANUAL
Gain Control	AUTO
Noise Reduction	DNR
Picture TVjustment	YES
WDR	DWDR
OSD Support	YES
Dip Switch	N/A
<b>General</b>	
Waterproof	N/A
Dual Voltage	N/A
IR Cut Filter	YES
Heater	N/A
Audio	N/A
Operation Temperature	-10°C ~ +50°C RH95% Max
Storage Temperature	-20°C ~ +60°C RH95% Max
Power Source	DC12V±10%,550mA
Dimension	∅ 94 x 69(H) mm
Weight	500g

## Mode switch by OSD



## Multi-function

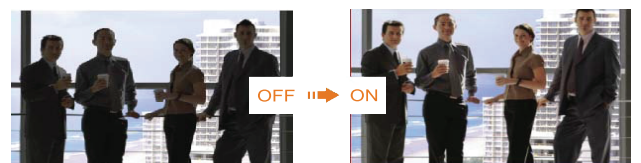
### 2D/3D-NR



### Defog



### DWDR





# 5MP 4 in 1 Sony Bullet Camera

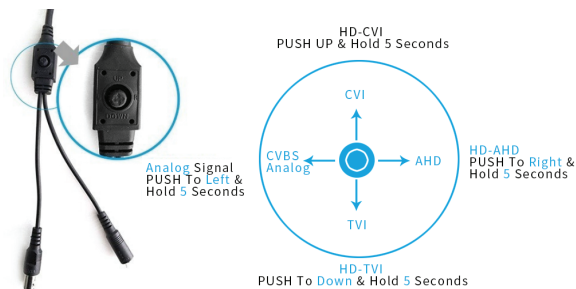
HD Analog Signal AHD, TVI, CVI, CVBS switch by OSD



## Specifications

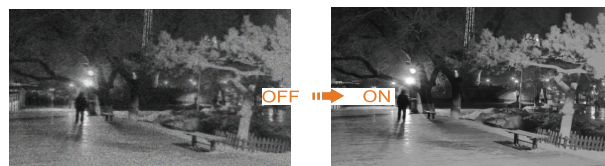
<b>Model NO.</b>	<b>iHIRBFIO-5SN2</b>
Video Output Mode	AHD/TVI/CVI 5M@25fps; CVBS 960H
<b>Camera</b>	
Image Sensor	SONY Starvis IMX335
Image Resolution	5.0 MP
Effective Pixels	5M:2592*1944
TV System	PAL/NTSC
Video Output Mode	AHD/TVI/CVI 5M@25fps; CVBS 960H
Electronic Shutter	1/25s~1/50,000s , 1/30s~1/60,000s
S/N Ratio	≥50dB
Scanning System	Progressive Scan
<b>Lens</b>	
Focus Length	Board Lens 3.6mm
Focus Control	Fixed
Lens Type	Fixed
Pixels	5M Pixels
Auto Iris Support	N/A
<b>Night Vision</b>	
Infrared LED	ϕ 28X6PCS
Infrared Distance	30M
IR Status	Under 10 Lux by CDS
IR Power On	CDS Auto Control
<b>Camera Features</b>	
Starlight	/
Day/Night	YES
OSD Menu Language	YES
White Balance	AUTO / MANUAL
Gain Control	AUTO
Noise Reduction	DNR
Picture TVjustment	YES
WDR	DWDR
OSD Support	YES
Dip Switch	N/A
<b>General</b>	
Waterproof	IP66
Dual Voltage	N/A
IR Cut Filter	YES
Heater	N/A
Audio	N/A
Operation Temperature	-10°C ~ +50°C RH95% Max
Storage Temperature	-20°C ~ +60°C RH95% Max
Power Source	DC 12V±10%, 550mA
Dimension	175(W) x 69(H) x 55(D)mm
Weight	600g

## Mode switch by OSD



## Multi-function

### 2D/3D-NR



### Defog



### DWDR

