



The Small Window Takes You To A Safe, Convenient Digital World & Perfect Life!

Rear side



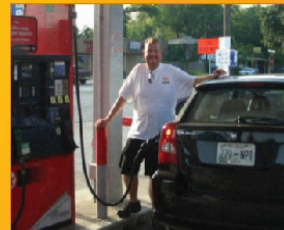
iHVR16HD-1080

### Specification

	Model	iHVR16HD-1080P
System	Main processor	Industrial grade embedded micro controller chip Huawei HIS chipset
	Operating system	Embedded LINUX operating system
	System resource	Multi-channel real-time recording synchronously, multi-channel real-time playback, multi-channel multi-user network operation, USB back up.
Display	Operation interface	16 bit real color GUI interface support mouse operation (Take all analog input as an example, others are depended on the selected channel mode)
	Display screen	1/16 screen
Video	Multi Mode Input & Playback Channels	Pure Analog: 16*AHD-1080p 16 Playback
		Mixed Analog/IP: 8*AHD-1080p (analog) + 8*1080p (IP) 8 Playback, 8*1080p (IP) + 8*960P (IP) 16 Playback
		Pure IP: 8*1080p 8 Playback, 8*1080p (IP) + 8*960P (IP) 16 Playback, 8*3M 8 Playback, 4*5M 4 Playback
Video	Image encode	H.264(High Profile)
	Monitor quality	VGA : 1080P ; HDMI : 1080P
	Playback quality	16*1080P @12fps (1920*1080) Coaxial HD Mode
	Encode capability	16*1080P @12fps (1920*1080) Coaxial HD Mode
	Decode capability	16*1080P @12fps (1920*1080) Coaxial HD Mode
	Multi-mode video input	DVR mode : 16*1080P/16*1080N
		HVR mode: 8*1080P+8*1080P
Motion detection	NVR mode: 8*1080P+8*960P/8*3M/4*5M	
Support camera	Each channel can set 192 (16*12) detection area ; can set multi-level of flexibility (for local analog channel only) AHD、CVI、TVI、IPC、960H	
Audio	Audio compression	G.711A
Record and playback	Record mode	Manual, alarm, motion detection, timing
	Local playback	1-16ch playback synchronously; Under the mode of DVR, Max support 16CH AHD 1080P playback synchronously
	Video search	Time, date, event, channel search
Storage and back up	Space occupation	Video: 1080N 30~40G/day*channel; 960P 20~30G/day*channel
		audio : 691.2M/day*channel
	Video storage	Local HDD , Network
Back up mode	Network backup, USB portable HDD, USB DVD-RW	
Interface	Video input	16CH BNC
	Video output	1CH VGA, 1CH HDMI
	Audio input	6CH RCA
	Audio output	1CH RCA
	Alarm input	4CH
	Alarm output	1CH
	Network port	RJ45 10M/100M self-adaptive Ethernet port
	PTZ control	1 RS485 ; support multi kinds of PTZ Protocol
	USB port	2*USB2.0
	HDD port	2 SATA (max support 12TB)
Wireless port	3G, WIFI(extension via USB port)	
Other	Tour	Yes
	Remote controller	Yes
	Power	12V/2A
	Dimension	325(Length) x255(Width) x60(Height)mm

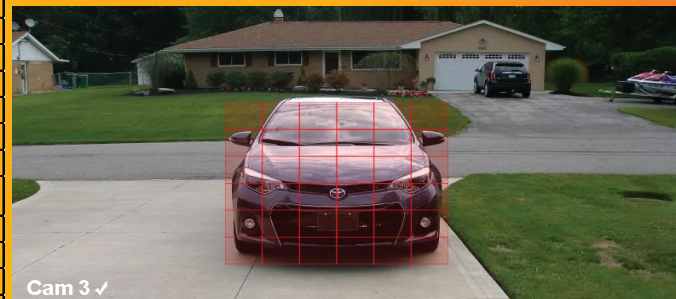
### H.264 High performance Image Compression

Our DVR employs the H.264 high performance image compression algorithm for excellent image recoding quality.



### Motion Detection

Have your DVR/XVR set to instantly send alert notifications to your email when motion is detected.



Cam 3 ✓

### Remote Access

Remote monitoring over the internet through app by iPhone, iPad, Android, or by IP Address from Windows computers.

