

2MP 4 in 1 Sony PTZ Camera, 18x Optical Zoom

HD Analog Signal AHD, TVI, CVI, CVBS
switch by OSD



Specifications

Model	iHDPTZ18xFIO-1080SN
Camera	
Image Sensor	Sony IMX323
Horizontal Resolution	2MP
S/N Ratio	>50db
PTZ	
Horizontal Rotation Speed	45°/S
Horizontal Rotation Range	0°~360°
Tilt Rotation Speed	30°/s
Tilt Rotation Range	0°~90°
Auto Flip	Support
Ratio Speed	Support
360° Scan	Support
A-B Scan	Support
Preset Points	220
Guard Tours	3 groups
Guard Points	Max. 16 points
Lens	
Focus Length	4.7mm-84.6mm
Focus Control	18X Optical Zoom
Night Vision	
Infrared LED	¢ 42x6PCS
IR Range	60m
Auto Control IR LED	PWM
Communication	
Communication Protocol	UTC
Communication interface	COAXIAL CABLE
Interface	
Audio	/
Alarm	/
General	
Weatherproof	IP66
Operating Temperature	Indoor: 0°~ +40° Outdoor: -40°~ +60°
Operating Humidity	≤90% Non Condensing
Heater & Blower	Auto temperature control
Power	DC12V 2A/3A
Lightning Protection	Transient voltage 6000V
Dimension	295x280x170(mm)
Weight	4.2 KG

Optical Zoom



Wide Angle



5x Optical Zoom



18x Optical Zoom

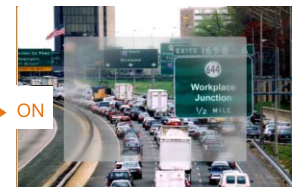
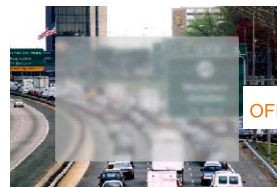
Multi-function

2D/3D-NR



OFF → ON

Defog



OFF → ON

DWDR



OFF → ON

