



iLink Professionals Ltd, www.iLinkpro.com



iTIVO-HD Config Software User's Manual

Version 1.0-BD

Contents

1. About This Document.....	3
Getting the iTIVO-HD Config Software	
2. Package.....	3
3. PC Requirements.....	3
4. Hardware Setup and Software Installation.....	3
The iTIVO-HD Config	
5. Software.....	6
5.1. Main.....	6
5.2. Display Control.....	6
5.3. Print Control.....	7
5.4. Exceptions.....	8
5.5. Alarm Controls.....	8
5.6. Port Setup.....	9
5.7. Exception and Transaction Logging.....	10
5.8. More.....	11
6. Procedure for Configuring the iTIVO-HD Text Inserter.....	11
7. Monitoring Your Cash Drawer.....	12
Configuring the iTIVO-HD for cash drawer	
7.1. monitoring.....	12
Wiring up the iTIVO-HD for cash drawer	
7.2. monitoring.....	13
A Appendix: Making the DB9-RJ45 serial cable.....	14

1. About This Document

This document will guide you through the installation and operation of the iTIVO-HD Config software.

iTIVO-HD Config is a companion tool for configuring iTIVO-HD text inserter through graphical user interface without prior knowledge of command scripting (writing cfg file). With iTIVO-HD Config, you would be able to exploit the full features of the iTIVO-HD easily and add value to your solution that you may want to provide to your end customer. These features include exception text filtering (VOID, NO-SALE etc), detection of abnormal cash drawer activities, and simple but yet powerful exception/transaction logging.

2. Getting the iTIVO-HD Config Software Package

The iTIVO-HD Config software package is available at www.iLinkpro.com/Software/iTIVO-HD Config.zip

3. PC Requirements

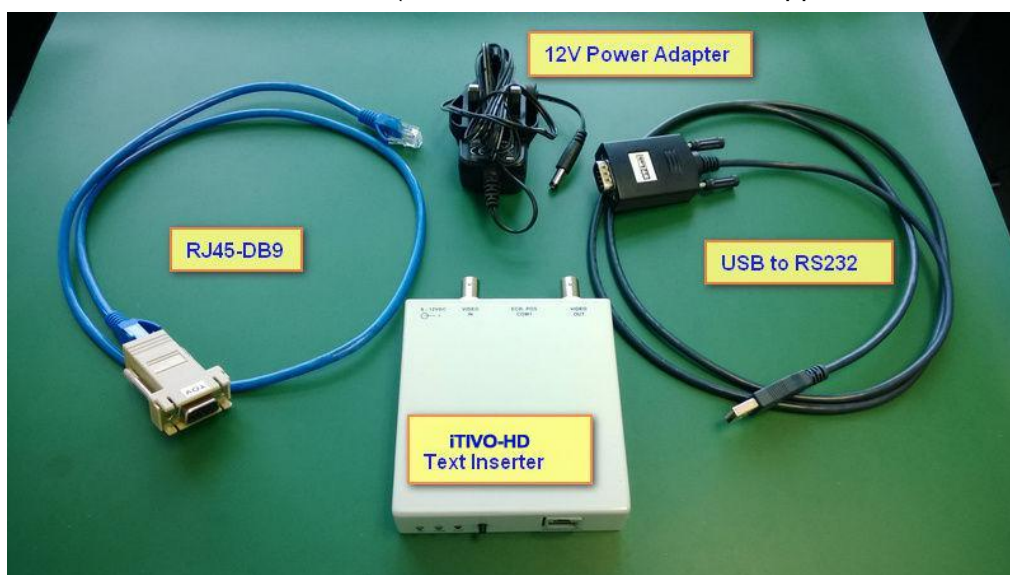
- a. Supported PC Platforms: Windows XP, Vista, Windows 7 and Windows 8.
- b. Microsoft .NET framework 4.0 and above.
- c. USB to serial cable or direct RS232 comport

Notes:

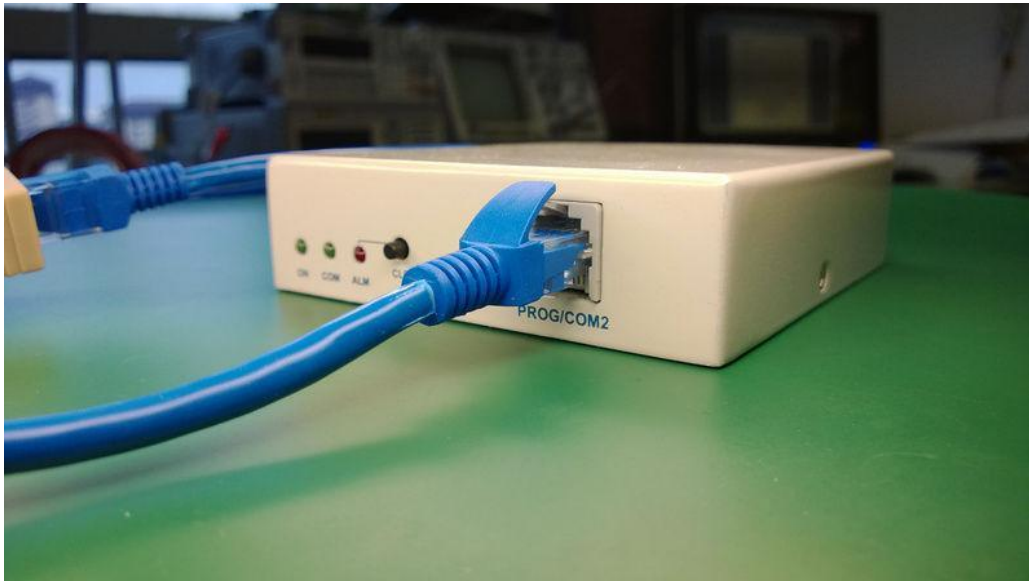
1. *It is recommended to update your PC with the latest version of the .NET framework. Please visit Microsoft website on how to update the .NET framework.*
2. *The highest version of .NET available for Windows XP platform is .NET 4.0. Higher versions of .NET do not work on XP platform. The current version of iTIVO-HD Config software is therefore compiled with .NET 4.0 for platform compatibility reason.*

4. Hardware Setup and Software Installation

1. Get the following items ready,
 - a. iTIVO-HD text inserter
 - b. USB to RS232 cable
 - c. 12V power adapter
 - d. RJ45 to DB9 serial cable. (This is a custom cable, see Appendix A for wiring details)



2. Plug the USB to RS232 cable (USB cable) into your PC's USB port. Power up the iTIVO-HD and connect one end of RJ5-DB9 serial cable to the USB cable and the other end to iTIVO-HD 's Prog port.



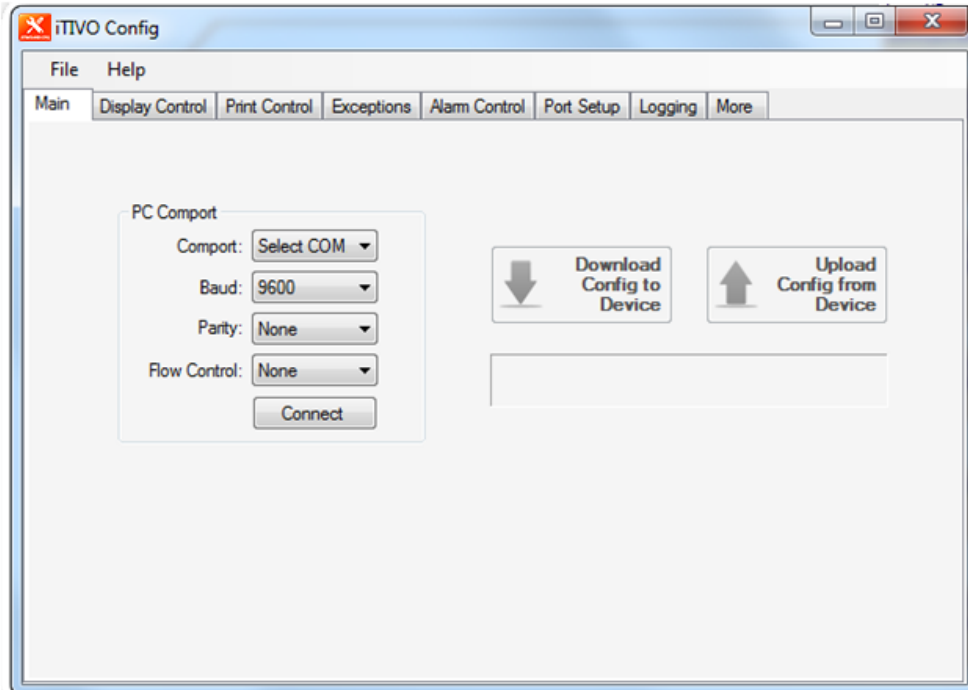
3. Unzip the iTIVO-HD Config.zip and save the iTIVO-HD config_setup.exe file to a temporary folder.
4. Double click the iTIVO-HD config_setup.exe to install the software.

Note: You may be prompted with this security message. Click Yes to proceed.



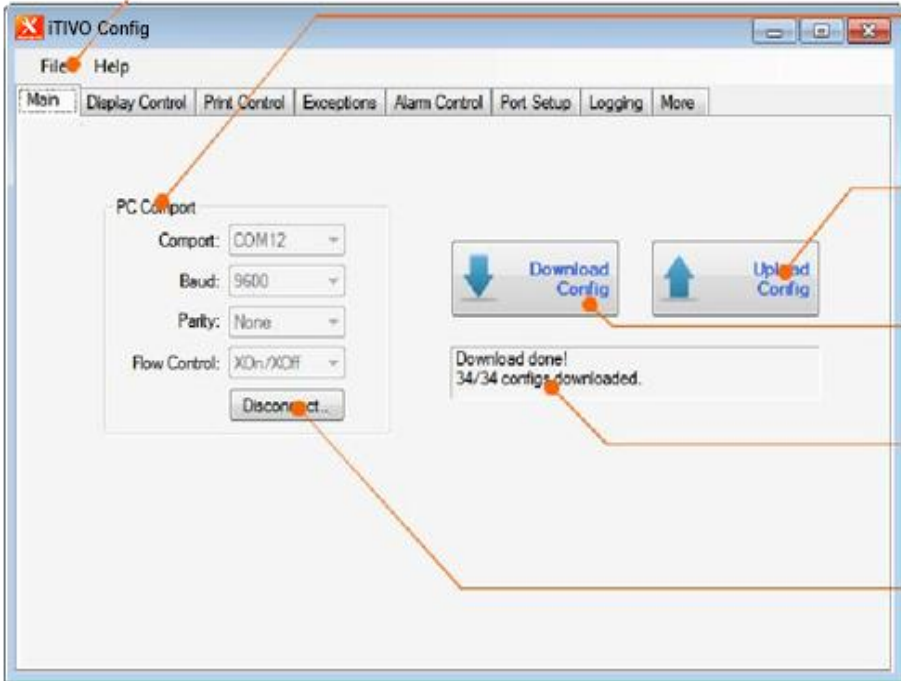
5. Follow through the installation guide, read and accept the license agreement and change the installation path if necessary. The iTIVO-HD Config software will launch automatically once it is successfully installed.

6. On the iTIVO-HD Config **Main** page, select the **Comport** that is connected to iTIVO-HD device. Click **Connect** and then click **Upload Config** to check the correctness of the setup. If the setup is correct, you will see uploading activity message being printed in the status box while uploading and "Upload done! xx configs uploads" once it is completed.



5. The iTIVO-HD Config Software

5.1. Main



Load/Save/Reset to default configuration.

PC Comport settings (Must match with iTIVO-HD 's PROG port settings. Default settings: 9600, no parity, XOnXOff).

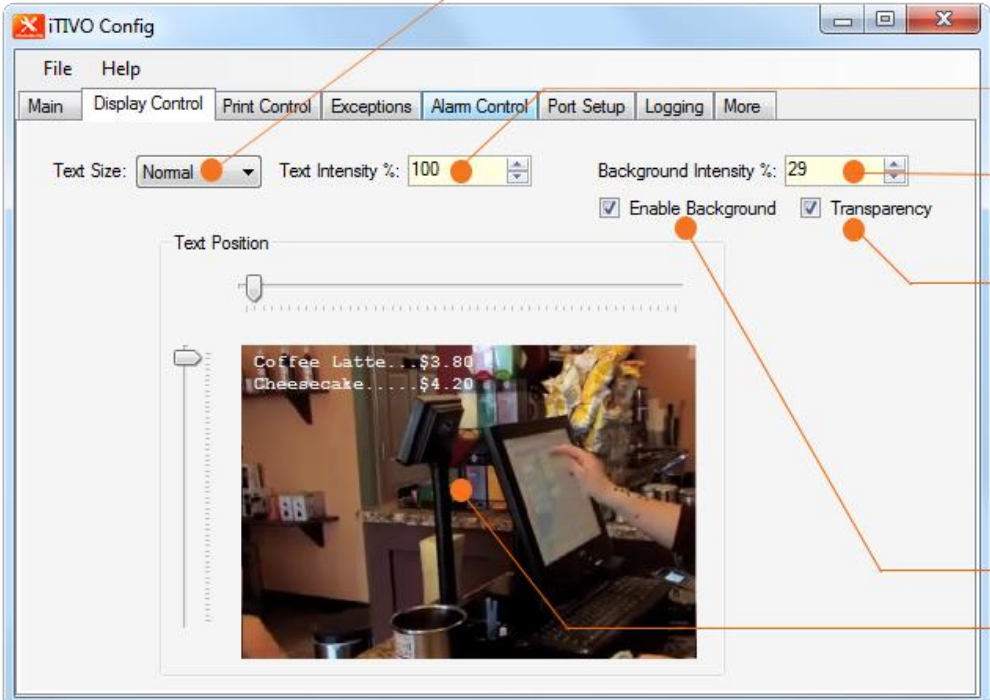
Upload the current configuration of iTIVO-HD to PC.

Download the PC configuration to iTIVO-HD .

Status of download and upload.

Make RS232 communication link between PC and iTIVO-HD.

5.2. Display Control



Adjust overlaid text size:
 - **Normal** (100%)
 - **Medium** (150%)
 - **Large** (200%)

Adjust text intensity:
 0% to 100%

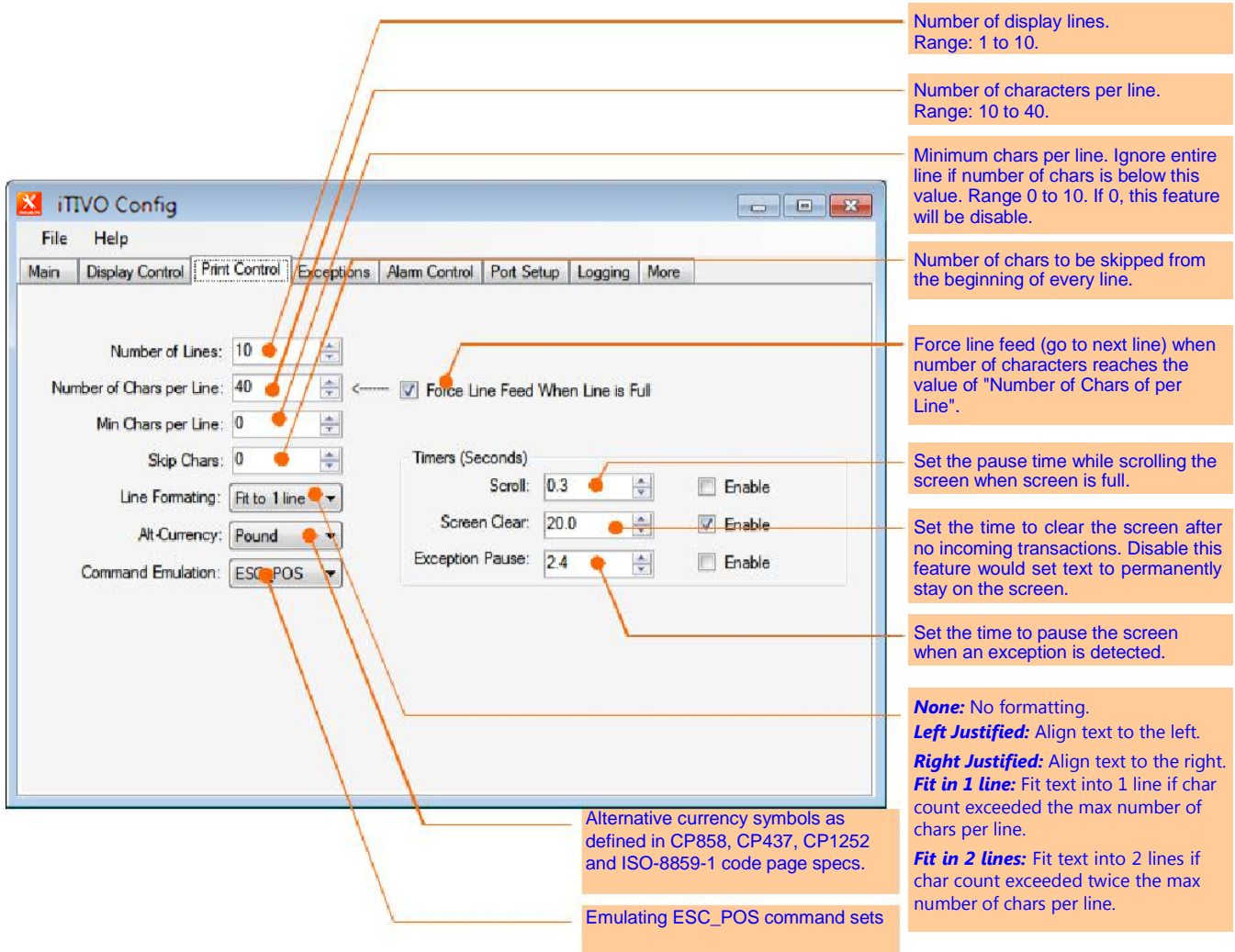
Adjust background intensity:
 0% to 100%.

Enable overlay transparency. With transparency is enable, part of the underlying CCTV image is allowed to "pass thru" the overlaid text and background. This setting is recommended when the underlying image has huge contrast dynamic.

Enable text background.

Slide the XY sliders to position the overlaid text.

5.3. Print Control



The screenshot shows the iTIVO Config window with the Print Control tab selected. The settings are as follows:

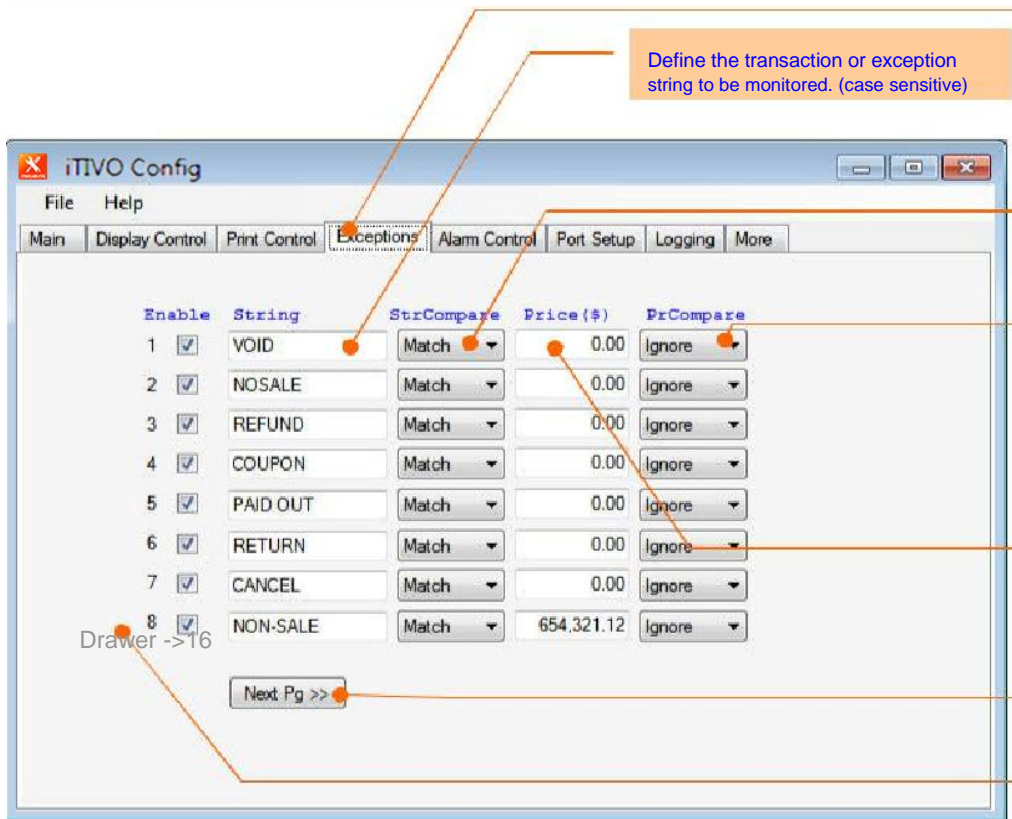
- Number of Lines: 10
- Number of Chars per Line: 40
- Min Chars per Line: 0
- Skip Chars: 0
- Line Formatting: Fit to 1 line
- Alt-Currency: Pound
- Command Emulation: ESC_POS
- Force Line Feed When Line is Full:
- Timers (Seconds):
 - Scroll: 0.3
 - Screen Clear: 20.0
 - Exception Pause: 2.4

Callouts provide detailed explanations for these settings:

- Number of display lines.** Range: 1 to 10.
- Number of characters per line.** Range: 10 to 40.
- Minimum chars per line.** Ignore entire line if number of chars is below this value. Range 0 to 10. If 0, this feature will be disable.
- Number of chars to be skipped from the beginning of every line.**
- Force line feed (go to next line) when number of characters reaches the value of "Number of Chars of per Line".**
- Set the pause time while scrolling the screen when screen is full.**
- Set the time to clear the screen after no incoming transactions. Disable this feature would set text to permanently stay on the screen.**
- Set the time to pause the screen when an exception is detected.**
- None:** No formatting.
- Left Justified:** Align text to the left.
- Right Justified:** Align text to the right.
- Fit in 1 line:** Fit text into 1 line if char count exceeded the max number of chars per line.
- Fit in 2 lines:** Fit text into 2 lines if char count exceeded twice the max number of chars per line.
- Alternative currency symbols** as defined in CP858, CP437, CP1252 and ISO-8859-1 code page specs.
- Emulating ESC_POS command sets**

5.4. Exceptions

Note: string comparison is case-sensitive.



Define the transaction or exception string to be monitored. (case sensitive)

Exceptions feature allow user to define string patterns and prices to be monitored by iTIVO-HD text inserter. When a defined pattern is matched, iTIVO-HD will raise an alert. Up to 16 exception patterns are supported.

String compare operator.
Ignore: Ignore string matching.
Match: Match string, case-sensitive.

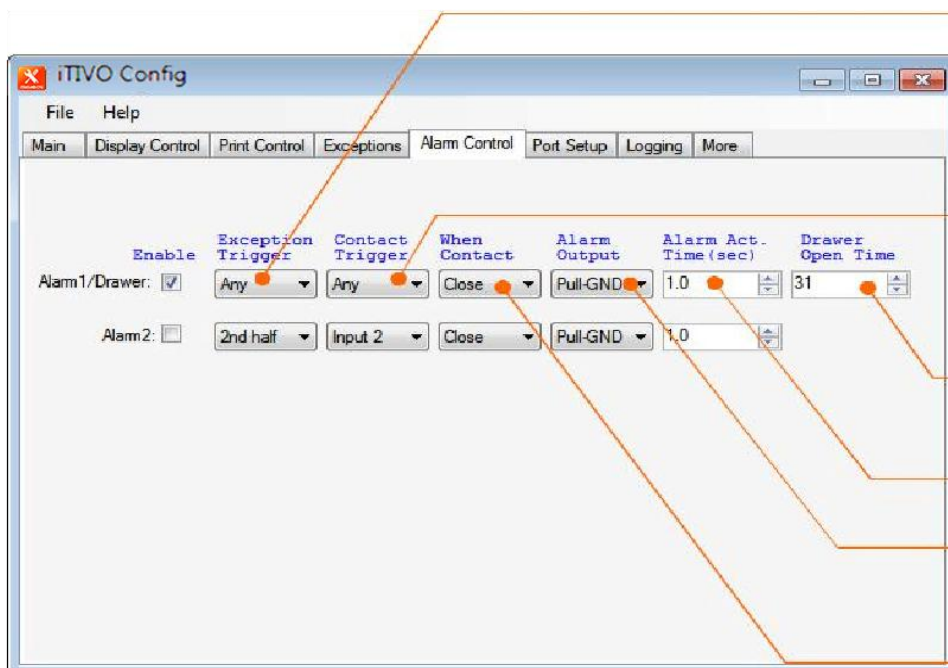
Price compare operator.
Ignore: disable item price matching
Below: item price is below
Above: item price is above
Equal: item price is equal to
Negative: item price is negative (minus sign)

Define item price. Price must contain character '\$' prefix for proper extraction of price value. Up to 6-digit significant place and 2-digit decimal place.

Go to next page: Exception 9 to 16.

Drawer ->16: Define the string pattern just before cash drawer is open.

5.5. Alarm Controls



None: Ignore all transaction exceptions.
Any: Any exception number.
1st Half: Exception 1 to 8.
2nd Half: Exception 9 to 16.
Drawer: Drawer open string defined in Exception 16.

None: Ignore all contact inputs.
Any: any contact input.
Input 1: contact at input1.
Input 2: contact at input2.
inp1 Drwr: drawer contact switch (input1).

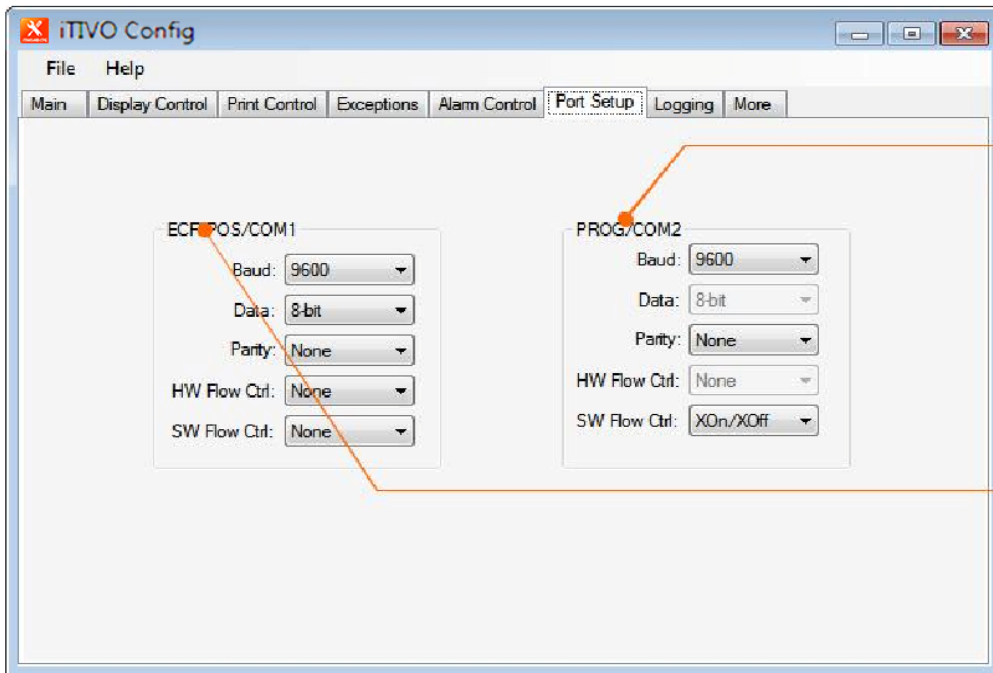
Maximum allowable time for the drawer to remain open before rising an alarm alert.

Set alarm duration time.

Behaviour of alarm output (open-collector) when activated. **Pull-GND:** output is pulled to ground **Open:** output is floating

Trigger alarm when contact is Open or Close.

5.6. Port Setup



PROG/COM2 port settings. Connect this port to PC.

It supports 2400 to 115200 baud rate, parity bits, SW flow control. Only 8-bit data bit is supported. HW flow control is not supported.

ECR-POST/COM1 port settings. Connect this port to POS or ECR machine.

It supports 2400 to 115200 baud rate, auto baud rate detection, 7- and 8-bit data, parity bits, SW and HW flow controls.

5.7. Exception and Transaction Logging

The exception and transaction logging feature allows user to log either exceptions or transactions. User may sort the order of a column, search a particular string pattern and save the current log view into an excel file for further data analysis.

SN	Date/Time	Line Text	Exc#	Inp#
1	05/02/14 16:26:57	1 VAN LATTE	8.00	9
2	05/02/14 16:26:04	SWISS LATTE S\$8.00		9
3	05/02/14 16:26:04	VOID SWISS LATTE S\$-8.00		1
4	05/02/14 16:26:05	VAN LATTE S\$8.00		9
5	05/02/14 16:26:08	1 VAN LATTE	8.00	9
6	05/02/14 16:26:15	SWISS LATTE S\$8.00		9
7	05/02/14 16:26:15	VOID SWISS LATTE S\$-8.00		1
8	05/02/14 16:26:15	VAN LATTE S\$8.00		9
9	05/02/14 16:26:19	1 VAN LATTE	8.00	9
10	05/02/14 16:26:26	SWISS LATTE S\$8.00		9
11	05/02/14 16:26:26	VOID SWISS LATTE S\$-8.00		1
12	05/02/14 16:26:26	VAN LATTE S\$8.00		9
13	05/02/14 16:26:30	1 VAN LATTE	8.00	9
14	05/02/14 16:26:37	SWISS LATTE S\$8.00		9
15	05/02/14 16:26:37	VOID SWISS LATTE S\$-8.00		1

Logging-in-progress indicator

Input contact ID (1 or 2 or 3) that triggers the exception event. 1: inp1, 2: inp2, 3: inp1 & inp2.

Exception ID (1 to 16) that triggers the exception event, as defined in **Exceptions** tab.

Line Text of exception or transaction.

Search the Line Text (case-insensitive)

Export the current log view to csv file.

Clear all the log history

Start/Stop logging

Log type selection
Exception: log exceptions as defined in Exceptions tab
Transaction: log every transaction

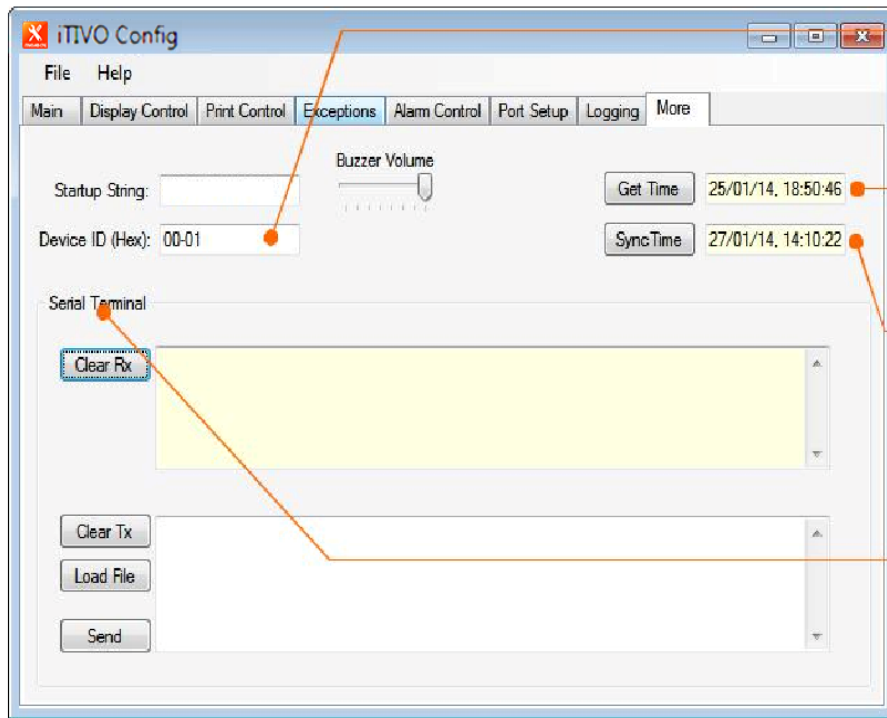
Example of text searching and sorting

SN	Date/Time	Line Text	Exc#	Inp#
11	05/02/14 23:58:05	VOID SWISS LATTE S\$-8.00	1	None
15	05/02/14 23:58:16	VOID SWISS LATTE S\$-8.00	1	None
19	05/02/14 23:58:27	VOID SWISS LATTE S\$-8.00	1	None
23	05/02/14 23:58:38	VOID SWISS LATTE S\$-8.00	1	None
27	05/02/14 23:59:11	VOID SWISS LATTE S\$-8.00	1	None
3	05/02/14 23:57:43	VOID SWISS LATTE S\$-8.00	1	None
31	05/02/14 23:59:22	VOID SWISS LATTE S\$-8.00	1	None
7	05/02/14 23:57:54	VOID SWISS LATTE S\$-8.00	1	None
10	05/02/14 23:58:05	SWISS LATTE S\$8.00	9	None
14	05/02/14 23:58:16	SWISS LATTE S\$8.00	9	None
18	05/02/14 23:58:27	SWISS LATTE S\$8.00	9	None
2	05/02/14 23:57:43	SWISS LATTE S\$8.00	9	None
22	05/02/14 23:58:38	SWISS LATTE S\$8.00	9	None
26	05/02/14 23:59:10	SWISS LATTE S\$8.00	9	None

Sort Exception ID, in ascending order

Search line texts containing "sw"

5.8. More



Device ID in 4-digit hexadecimal number. This ID defines the RS-485 address of the iTIVO-HD for networking application.

Show date and time of iTIVO-HD , In dd/MM/yy hh:mm:ss format, when **Get Time** is clicked. (Only applicable to -RX model)

Show PC current date and time. In dd/MM/yy hh:mm:ss format. When **Sync Time** is click, the iTIVO-HD real-time clock will sync its time with PC time. (Only applicable to -RX model)

Simple serial terminal for general testing purpose.

6. Procedure for Configuring the iTIVO-HD Text Inserter

1. At the iTIVO-HD Config, make necessary changes of the iTIVO-HD's parameters located at their appropriate tabs or load a user-defined config file (**File** → **Load Config**).
2. On the **Main** tab, select the **Comport** that is connected to the iTIVO-HD device and click **Connect**, and then click **Download Config**.
3. The status box will show the progress of the downloading and, if successful, it will show "Download done!" message when it is done.
4. It is recommended to save the current config settings for reusing it in the future: **File** → **Load Config**

7. Monitoring Your Cash Drawer

You may setup the iTIVO-HD device to monitor your POS's cash drawer to safeguard your cash, and rise an alarm when an abnormal activity is detected: i.e. whether the drawer is open for too long or force open.

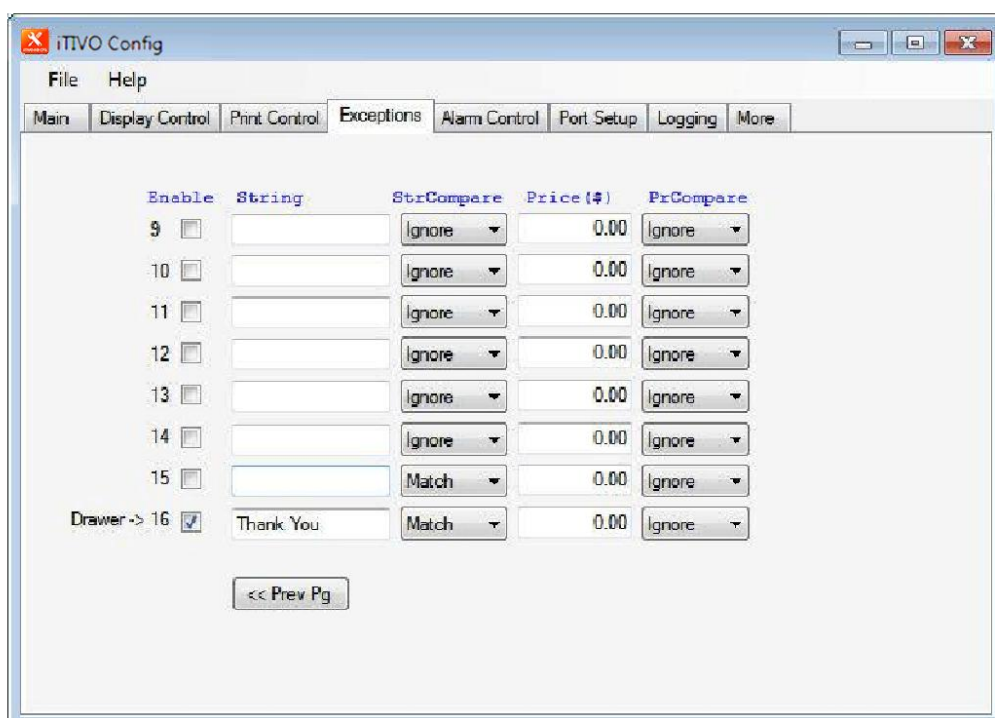
The iTIVO-HD monitors the cash drawer's contact switch (usually its contact closes when drawer is closed) and condition it with incoming transaction strings in real-time. Whenever the cash drawer is open (contact switch open for example), the iTIVO-HD will determine the "condition" or cause of the opening: whether it is open by tendering a sale transaction or by force (without sale transaction).

If the condition is by force, an alarm will be activated after 5sec (fixed time) if the drawer remains open.

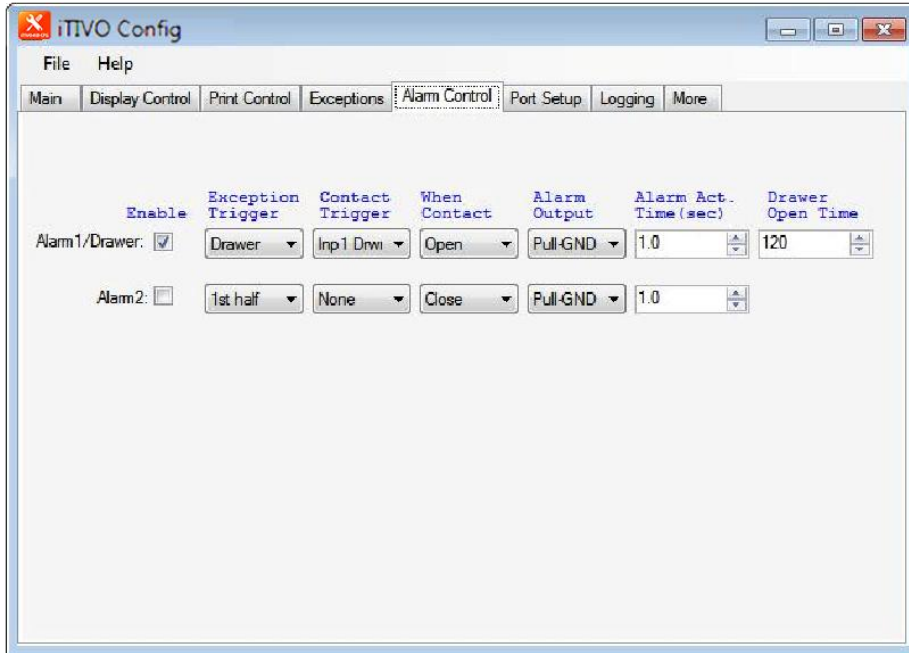
If the condition is by tendering a sale transaction, the operator must close the cash drawer back again within the time defined in **Drawer Open Time** field (up to maximum time of 4 minutes 21 seconds, see below). iTIVO-HD validates every sale transaction by matching the transaction strings with the user-defined string pattern defined in Exception #16 field (see below). This string pattern is usually a common string pattern printed at the end of every receipt, e.g. "Thank You" string. In order for this to work properly, the "Thank You" string must come just *after* (up to 5sec) the drawer opens.

7.1. Configuring the iTIVO-HD for cash drawer monitoring

In **Exceptions** tab, click **Next Pg** to go to next page of exceptions (9 to 16) and define your cash drawer string pattern in Exception #16 field. Check the Enable box and select **Match** in **StrCompare** and **Ignore** in **PrCompare**.



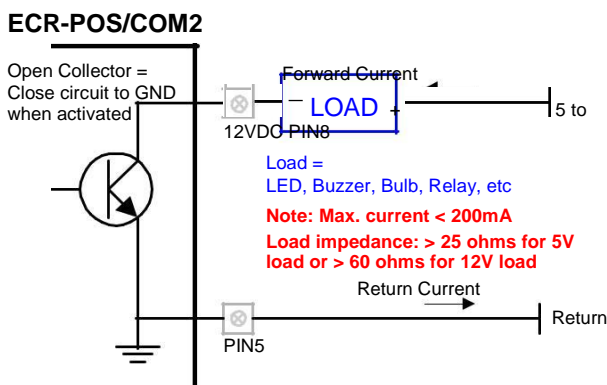
In **Alarm Control** tab, select **Drawer** in **Exception Trigger** and the **Contact Trigger** will automatically change to **Inp1 Drwr**. Define the state of the contact switch when the drawer is open in **When Contact** selection and the allowable drawer opening time in **Drawer Open Time** to allow the operator to collect money and give back change to the customer.



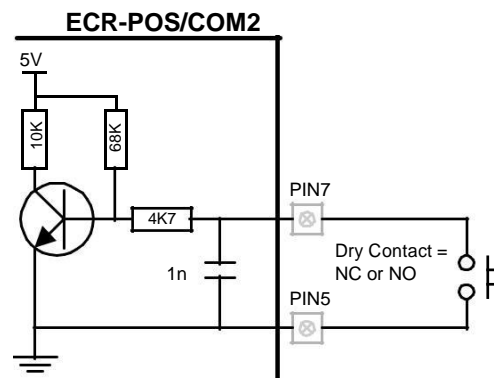
7.2. Wiring up the iTIVO-HD for cash drawer monitoring

Connect IN1 (pin 7) and GND (pin 6 or 5) of COM1 to the drawer contact switch. Connect OUT1 (pin 8) and GND (pin 6 or 5) of COM1 to an external alarm sounder or relay (external load).

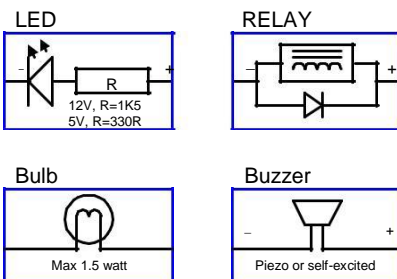
OUT Connection (Alarm Output)



IN Connection (Drawer switch contact)

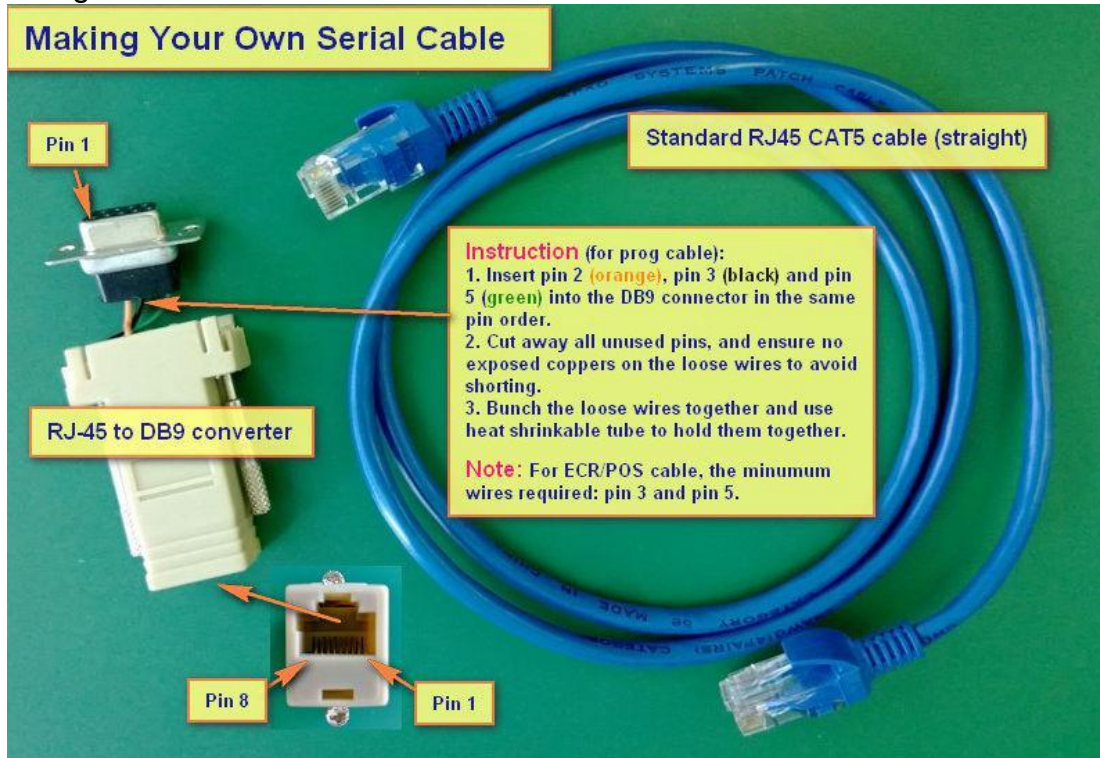


Examples of External Loads



A Appendix: Making the DB9-RJ45 serial cable

a. Below depicts the custom DB9-RJ45 serial cable, which is made of off-the-shelf parts: a Cat 5 or better LAN cable (straight wiring) and a RJ-45 to DB9 patch converter . See the wiring instructions in text box.



b. Below is the pin mapping between the DB9 and RJ45

DB9 (PC)		RJ45 Plug (iTIVO-HD)
PIN 2 (RX)	->	PIN 2 (TX)
PIN 3 (TX)	->	PIN 3 (RX)
PIN 5 (GND)	->	PIN 5 (GND)

=== END OF DOCUMENT ===