



5MP



The Small Window Takes You To A Safe, Convenient Digital World & Perfect Life!

Rear side



iHVR8HD-5MP



Specification

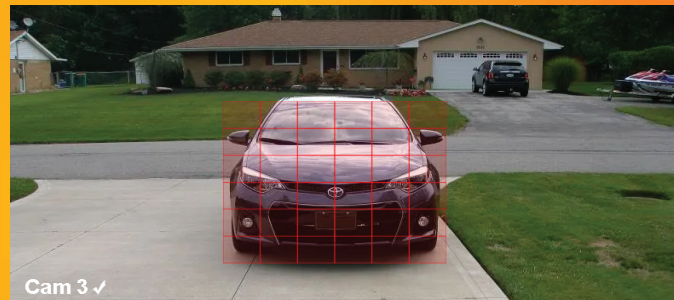
Model		iHVR8HD-5MP	
System	Main processor	Industrial grade embedded micro controller chip Huawei HIS chipset	
	Operating system	Embedded LINUX operating system	
	System resource	Multi-channel real-time recording synchronously, multi-channel real-time playback, multi-channel multi-user network operation, USB back up.	
Display	Operation interface	16 bit real color GUI interface support mouse operation	
	Display screen	(Take all analog input as an example, others are depended on the selected channel mode) 1/8 screen	
Video	Image encode	H.264(High Profile)	
	Monitor quality	VGA : 1080P ; HDMI : 4K	
	Playback quality	8*5M@11fps / 8*4M@15fps / 8*3M@18fps / 8*1080P @25fps	
	Encode capability	8*5M@11fps / 8*4M@15fps / 8*3M@18fps / 8*1080P @25fps	
	Decode capability	8*5M@11fps / 8*4M@15fps / 8*3M@18fps / 8*1080P @25fps	
	Multi Mode Input & Playback Channels	Pure Analog: 8*AHD-5MP - 4 Playback Mixed Analog/IP: 4*AHD-5MP (analog) + 4*5MP (IP) - 4 Playback Pure IP: 8*3MP - 8 Playback, 4*5MP (IP) - 4 Playback	
	Multi-mode video input	DVR mode : 8*5M/8*4M/8*3M/8*1080P HVR mode: 4*3M+4*3M NVR mode: 8*1080P+8*960P/8*3M/4*5M	
	Motion detection	Each channel can set 192 (16*12) detection area ; can set multi-level of flexibility (for local analog channel only)	
	Support camera	AHD, CVI, TVI, IPC, 960H	
	Audio	Audio compression G.711A	
Record and playback	Record mode	Manual, alarm, motion detection, timing	
	Local playback	1-8ch playback synchronously; Under the mode of DVR, Max support 8CH AHD 1080P playback synchronously	
	Video search	Time, date, event, channel search	
Storage and back up	Space occupation	Video : 4M 70G~80G /day*channel ; 3M 50~60G/day*channel ; 1080P 30~40G/day*channel; 960P 20~30G /day*channel audio : 691.2M/day*channel	
	Video storage	Local HDD , Network	
	Back up mode	Network backup, USB portable HDD, USB DVD-RW	
	Video input	8CH BNC	
Interface	Video output	1CH VGA, 1CH HDMI	
	Audio input	4CH RCA	
	Audio output	1CH RCA	
	Alarm input	NO	
	Alarm output	NO	
	Network port	RJ45 10M/100M self-adaptive Ethernet port	
	PTZ control	1 RS485 ; support multi kinds of PTZ Protocol	
	USB port	2*USB2.0	
	HDD port	1 SATA (max support 6TB)	
	Wireless port	3G, WIFI(extension via USB port)	
	Other	Tour	Yes
		Remote controller	Yes
		Power	12V/2A
Dimension		260(Length) x234(Width) x47(Height)mm	

5MP provides the viewer with an image that has 2.4 times as many pixels as 1080p resolution.



Motion Detection

Have your DVR/XVR set to instantly send alert notifications to your email when motion is detected.



Remote Access

Remote monitoring over the internet through app by iPhone, iPad, Android, or by IP Address from Windows computers.

