

The Small Window Takes You To A Safe, Convenient Digital World & Perfect Life!

Rear side



iHVR16HD-4K

### Specification

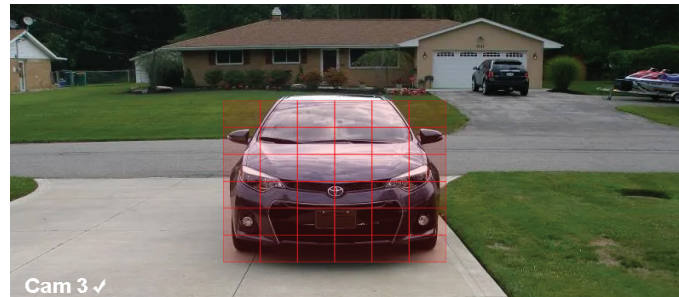
Model		iHVR16HD-4K	
System	Main processor	HI3531D	
	Operating system	Embedded LINUX operating system	
	System resource	Multi-channel real-time recording synchronously, multi-channel real-time playback, multi-channel multi-user network operation, USB back up.	
Display	Operation interface	16 bit real color GUI interface support mouse operation (Take all analog input as an example, others are depended on the selected channel mode)	
	Display screen	1/4 screen	
Video	Image encode	H.265	
	Monitor quality	VGA: 1080P ; HDMI: 4K	
	Playback quality	16*8MP 15fps(AHD) / 16*5MP 20fps(4 in 1)	
	Encode capability	16*8MP 15fps(AHD) / 16*5MP 20fps(4 in 1)	
	Decode capability	8*8MP 15fps(AHD) / 8*5MP 20fps(4 in 1)	
	Multi-mode video input & Playback Channels		Pure Analog: 16*AHD-5MP 16 Playback, 16*AHD-8MP 8 Playback Mixed Analog/IP: 4*AHD-8MP (analog) + 4*8MP (IP) 4 Playback Pure IP: 32*1080p (IP) 8 Playback, 16*3MP (IP) 8 Playback, 8*5MP (IP) 4 Playback
		Motion detection	Each channel can set 192 (16*12) detection area: can set multi-level of flexibility (for local analog channel only)
	Support camera	AHD、CVI、TVI、IPC、CVBS	
Audio	Audio compression	G.711A	
Record and playback	Record mode	Manual、alarm、motion detection、timing	
	Local playback	1-4ch playback synchronously; Under the mode of DVR, Max support 4CH AHD 1080P playback synchronously	
	Video search	Time、date、event、channel search	
Storage and back up	Space occupation	Video: 4M 70G~80G /day*channel ; 3M 50~60G/day*channel: 1080P 30~40G/day*channe; 960P 20~30G /day*channel audio: 691.2M/day*channel	
		Video storage	Local HDD 、 Network
	Back up mode	Network backup、 USB portable HDD、 USB DVD-RW	
Interface	Video input	16CH BNC	
	Video output	1CH VGA, 1CH HDMI	
	Audio input	4CH RCA	
	Audio output	1CH RCA	
	Alarm input	8CH	
	Alarm output	1CH	
	Network port	RJ45 10M/100M/1000M self-adaptive Ethernet port	
	PTZ control	1 RS485: support multi kinds of PTZ Protocol	
	USB port	2*USB2.0	
	HDD port	2 SATA (each max support 8TB)	
Wireless port	3G、WIFI(extension via USB port)		
Other	Tour	Yes	
	Remote controller	Yes	
	Power	12V/4A	
	Dimension	350(Length) x296(Width) x44(Height)mm	

4K provides the viewer with an image that has 4 times as many pixels as 1080p resolution.



### Motion Detection

Have your DVR/XVR set to instantly send alert notifications to your email when motion is detected.



### Remote Access

Remote monitoring over the internet through app by iPhone, iPad, Android, or by IP Address from Windows computers.

